

LA VALVE AORTIQUE

- ANATOMIE
- PHYSIOLOGIE
- ANATOMO-PATHOLOGIE

Andréa Cesalpino

(1519-1603)

LA RACINE AORTIQUE

ETAGE VALVULAIRE

ETAGE SUSVALVULAIRE

ETAGE SOUSVALVULAIRE

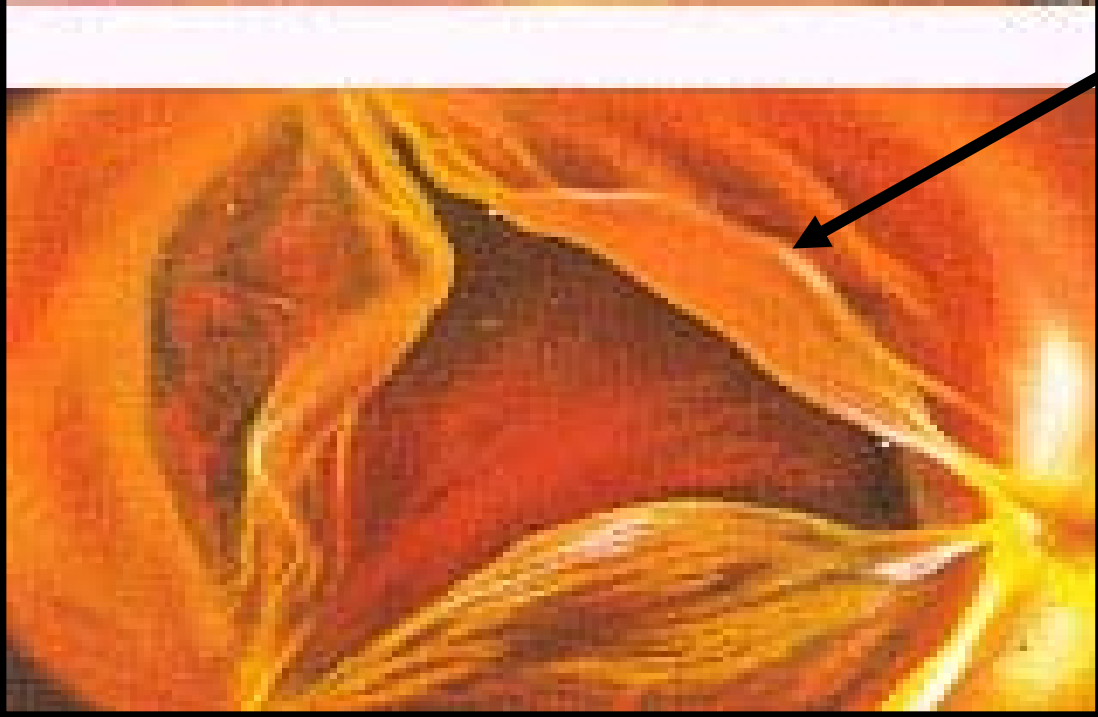
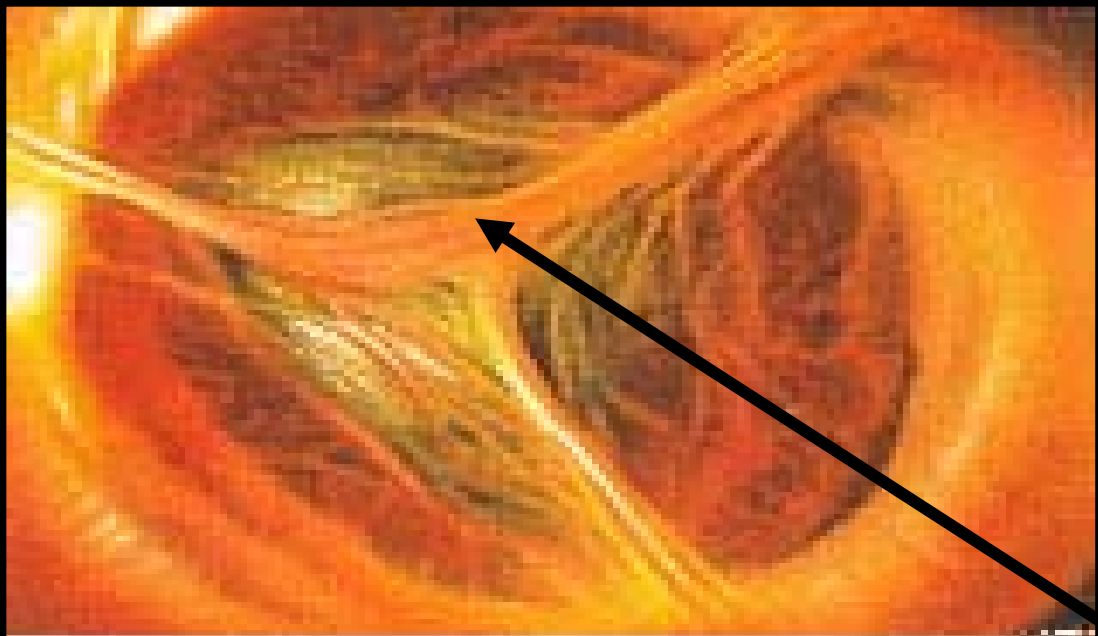
ETAGE VALVULAIRE

3 SIGMOIDES

CORONAIRE DROITE (ant-dt)

CORONAIRE GAUCHE (ant-gh)

NON CORONAIRE



Nodules
Arantius

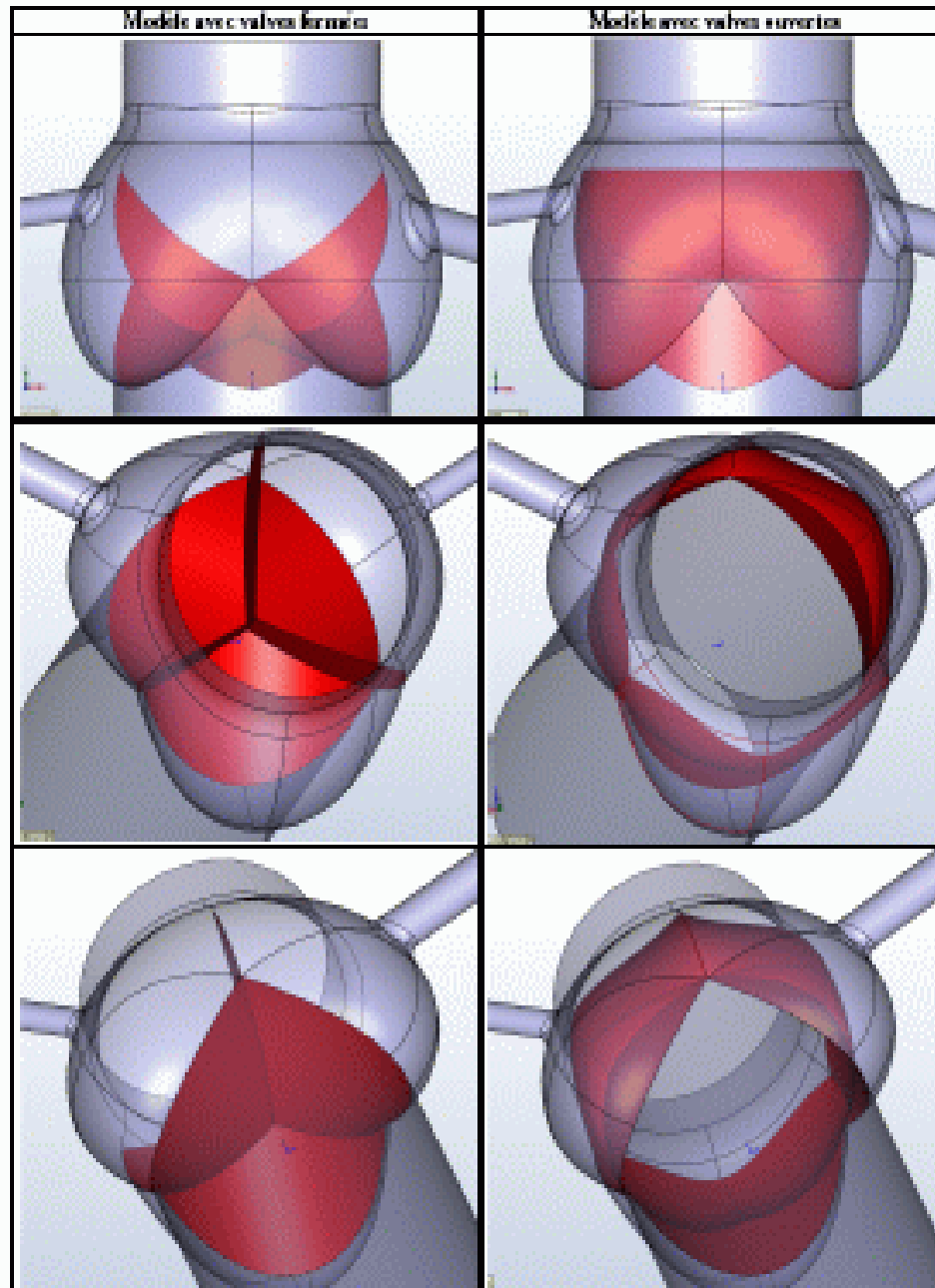
ETAGE SUSVALVULAIRE

3 DILATATIONS OU SINUS DE VALSALVA

VALSALVA CORONAIRE DROIT

VALSALVA CORONAIRE GAUCHE

VALSALVA NON CORONAIRE



ETAGE SOUSVALVULAIRE

3 ESPACES SOUS COMMISSUREAUX

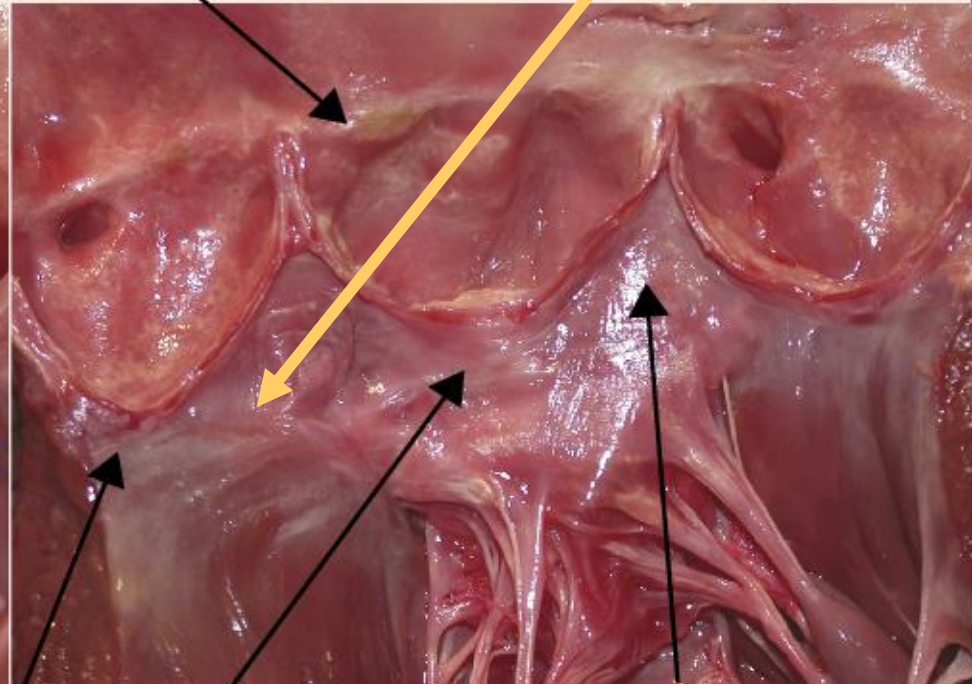
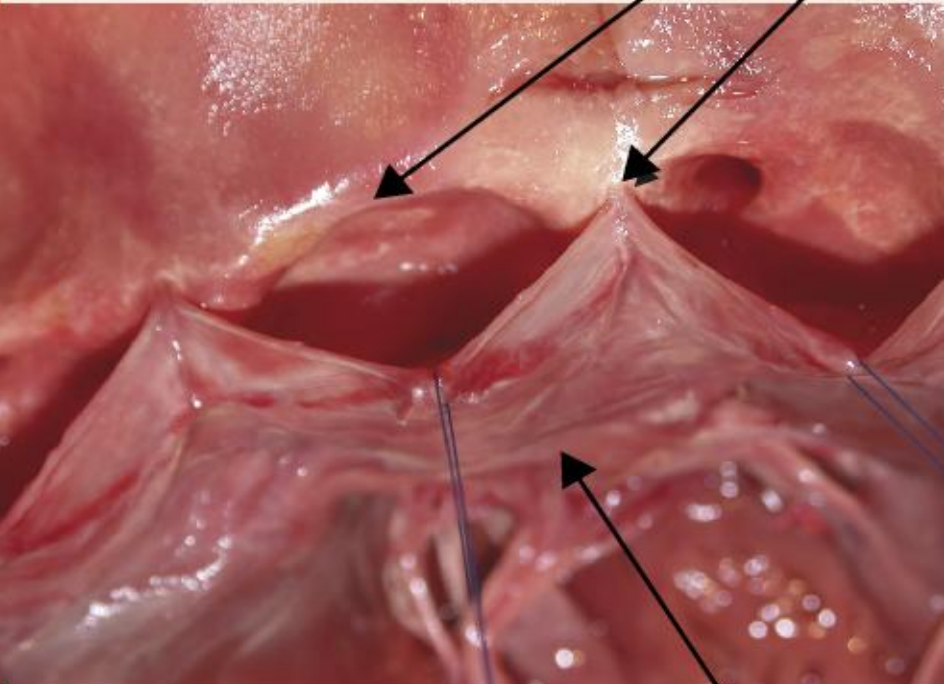
FAISCEAU DE HIS

Anneau aortique



HIS
HIS

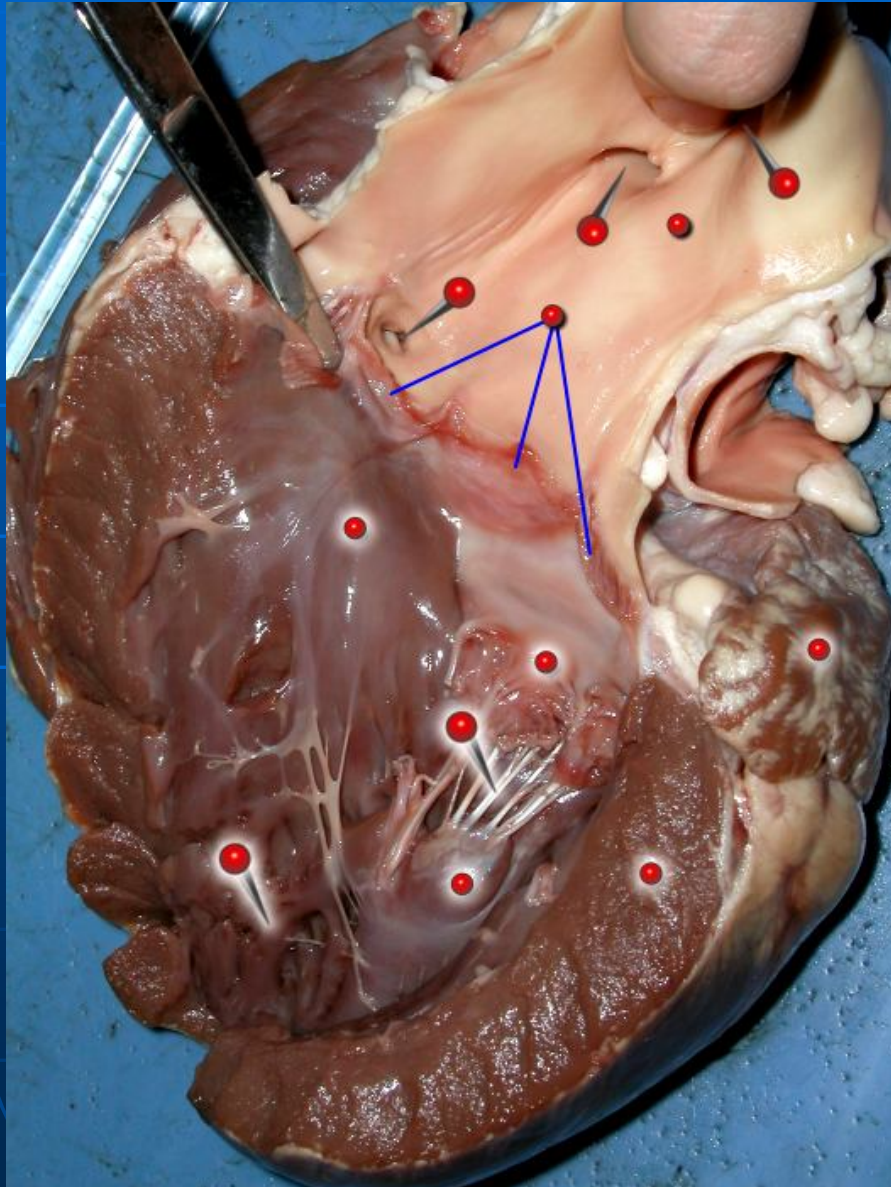
Jonction sinotubulaire



Base de l'anneau aortique

Triangles
sous-commissuraux

RACINE AORTIQUE



COMMENT CA MARCHE ?

GRADIENT DE PRESSION

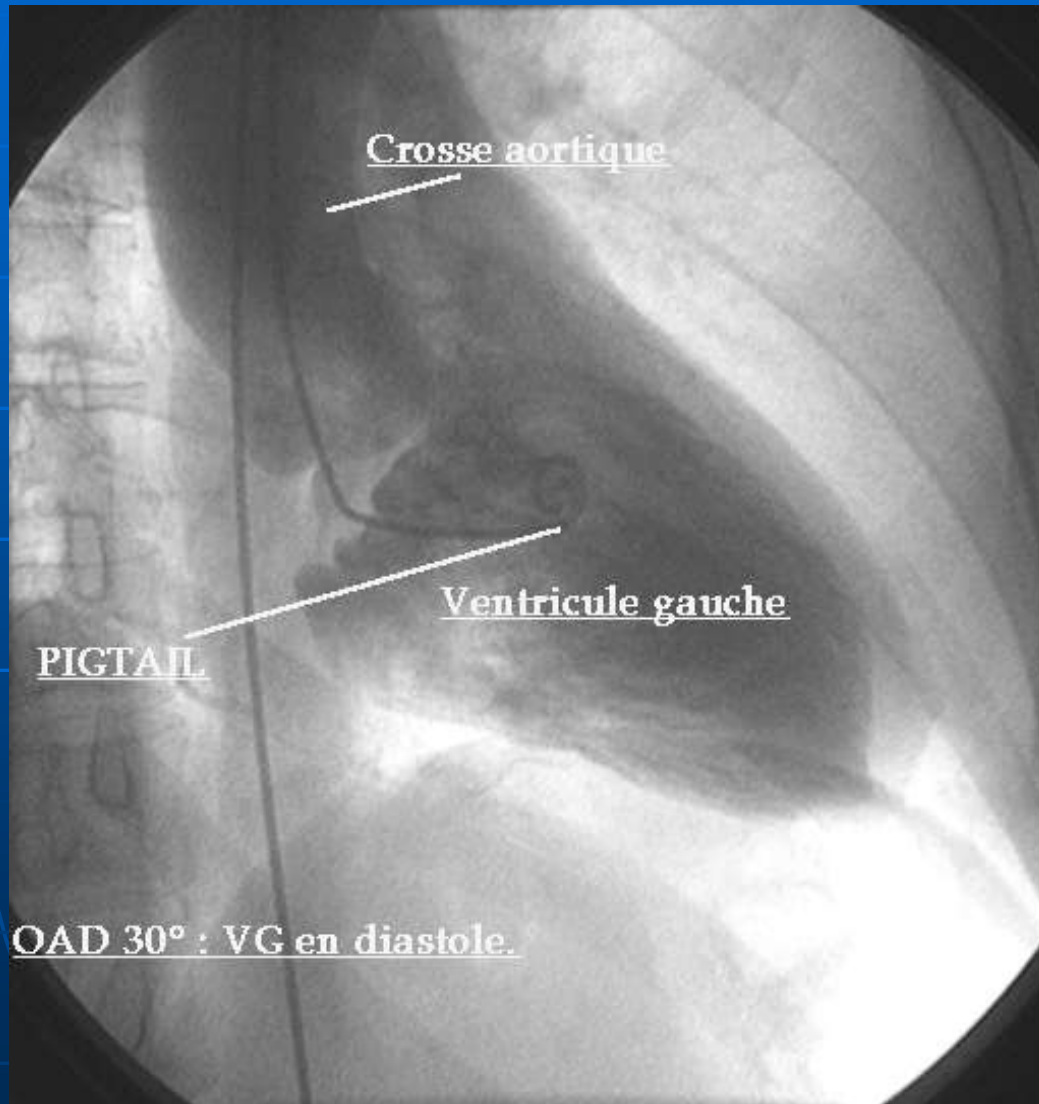
DIASTOLE VG



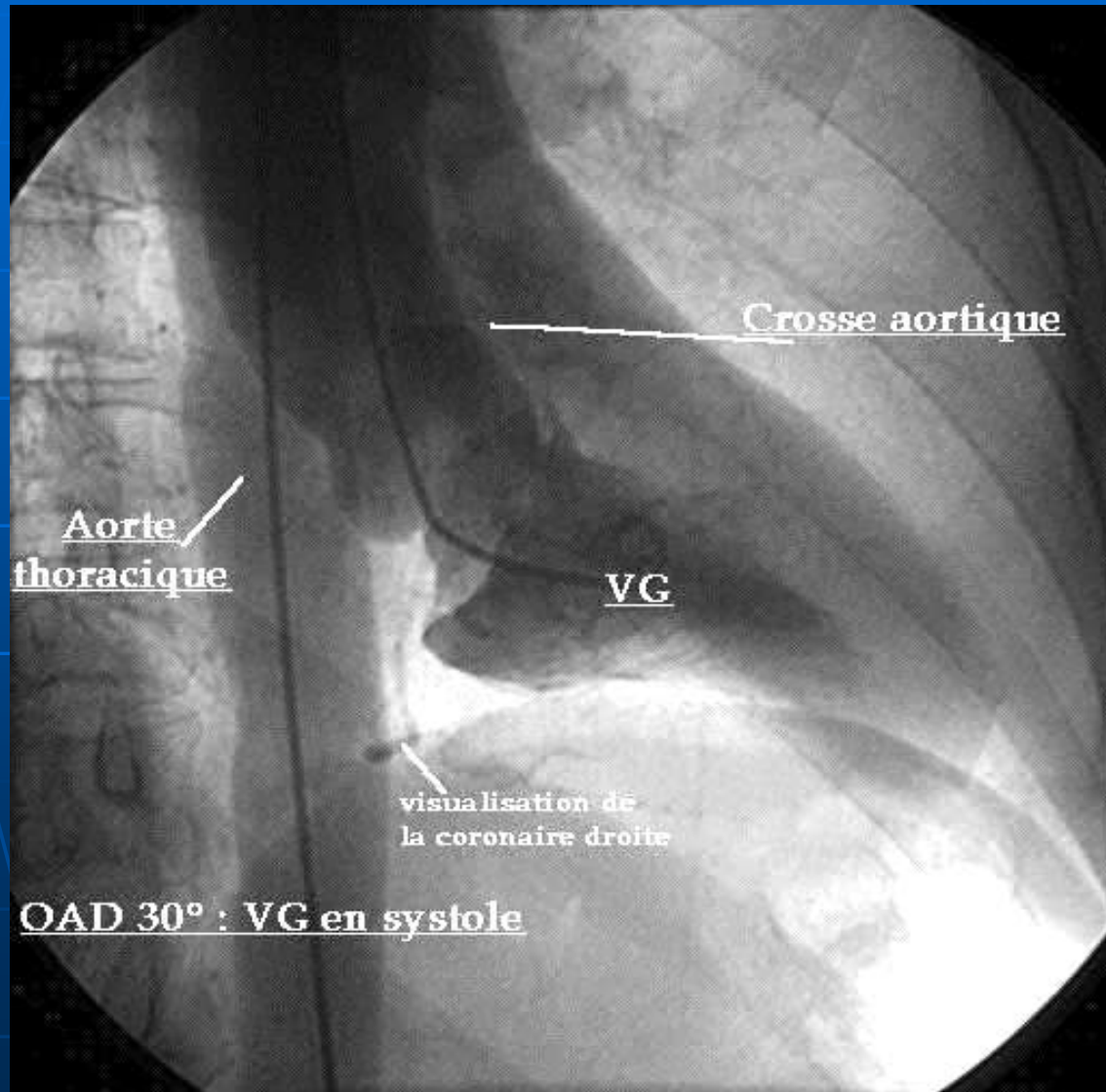
SYSTOLE VG



DIASTOLE VG



SYSTOLE VG



ANATOMO-PATHOLOGIE

RETRECISSEMENT

INSUFFISANCE

MALADIE

R.A.C



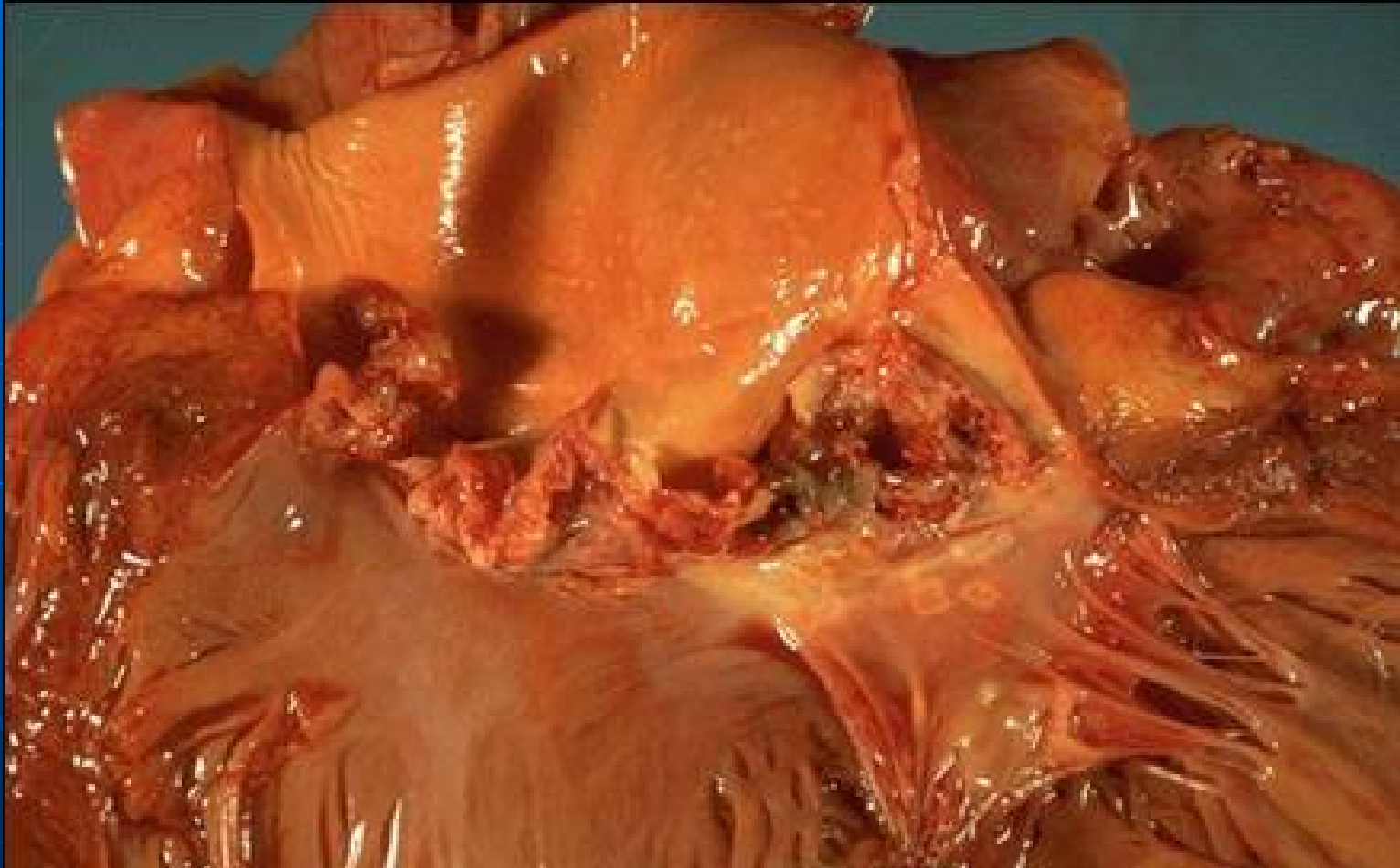
RAC SUR BICUSPIDIDIE



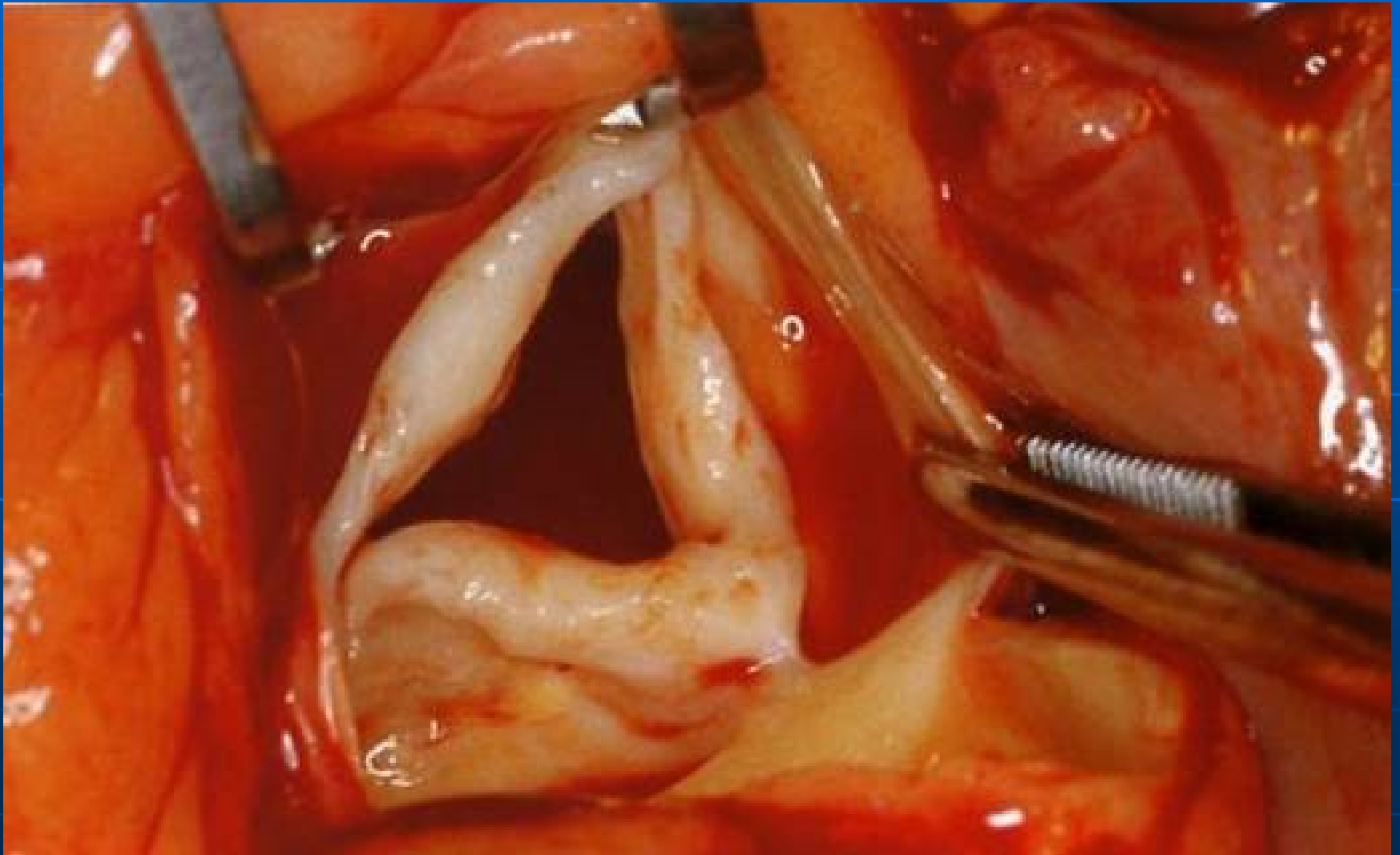
IAO par RAA



IAO par ENDO.



MALADIE AORTIQUE



BIOPROTHESE DEGENEREE



CONCLUSION

- D'UN POINT DE VUE PUREMENT ANATOMIQUE LA PROTHESE VALVULAIRE AORTIQUE PAR VOIE ENDOVASCULAIRE NE S'ADRESSE QU'AUX PATIENTS PORTEURS D'UN R.A.C. DEGENERATIF.